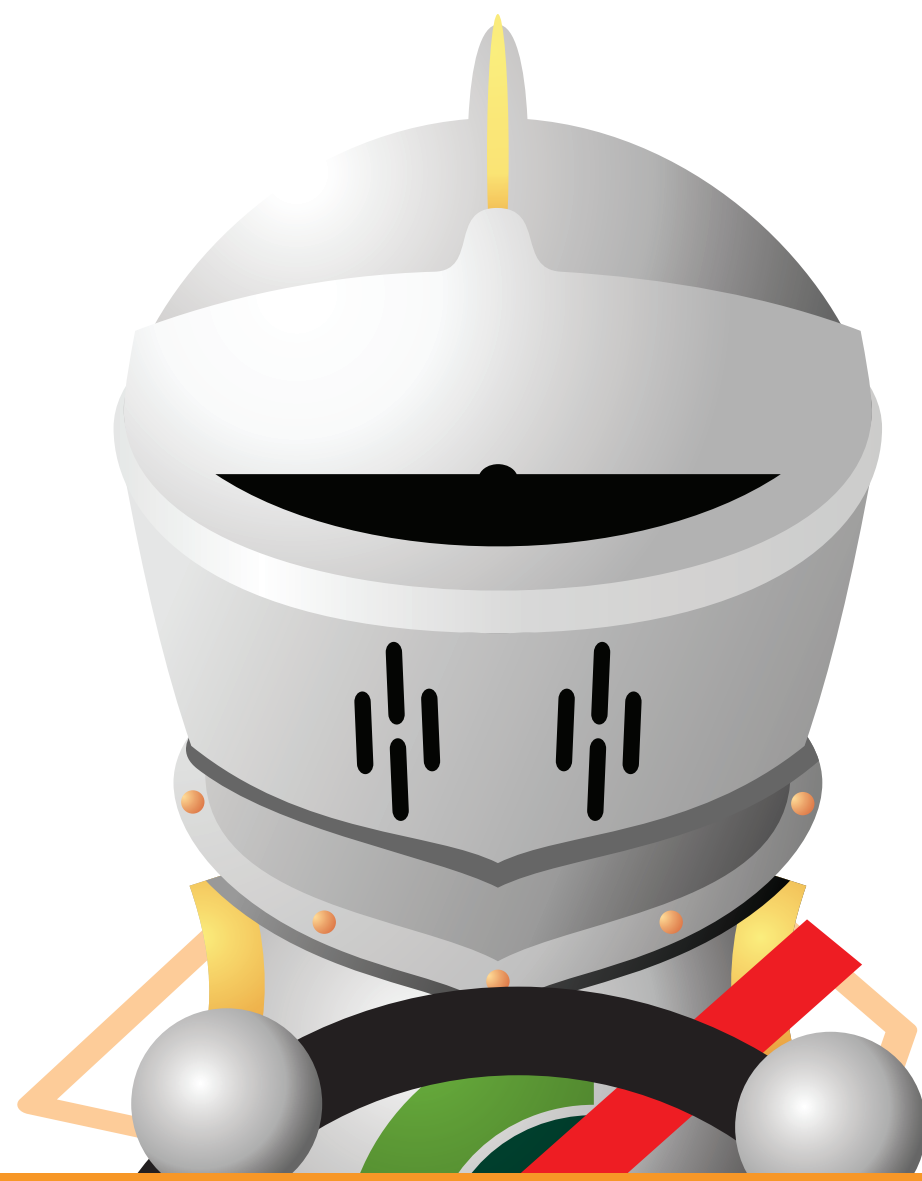


# WE WORK SAFE!

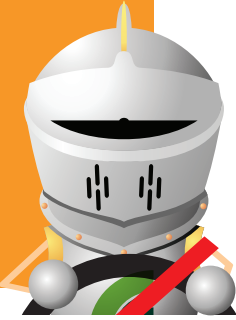


## 9 GOLDEN RULES



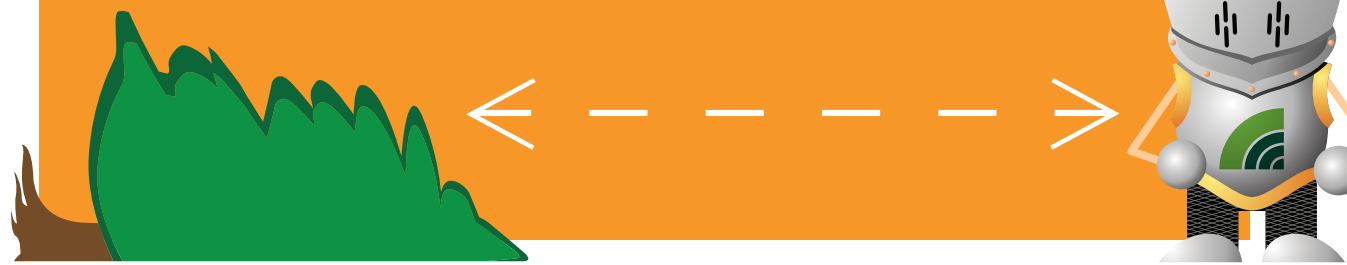
### RULES OF THE ROAD

The rules of the road apply.  
Never do more than 50kph in the forest.  
Drive to the conditions. Keep left.  
Always drive with your headlights on.  
Always wear your seatbelt.



### STAY TWO LENGTHS

Always stay 2 tree lengths away  
during all felling operations,  
unless buddy felling.



### SAFE ZONES

Whatever operation you are involved  
with, identify the safe zone and  
use it as required.



### SAFETY GEAR

Wear all appropriate PPE for the  
job that you are doing.  
Hi-viz must always be worn in  
the forest.



### ACCESS POINTS

Control all access points  
to your worksite.



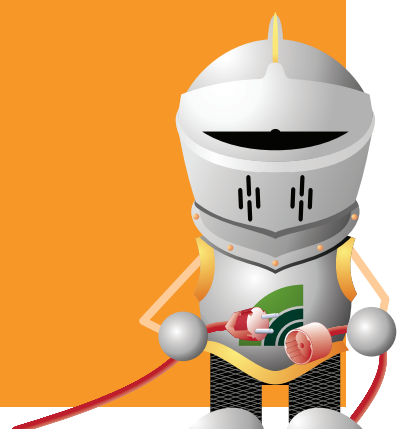
### TRAINED FOR THE TASK

Never undertake a job that you are  
not trained or in training for.



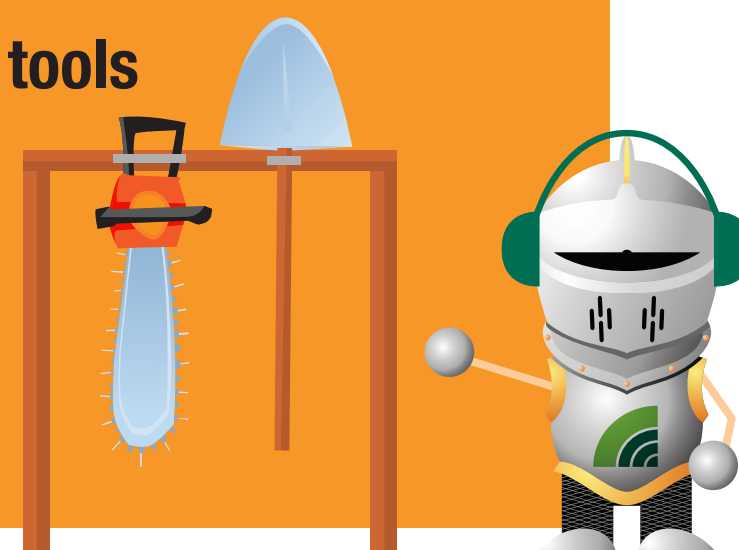
### LOCK IT OUT

Always leave equipment in  
a zero energy state.



### RIGHT TOOLS, RIGHT JOB

Always use the right tools  
for the job.



### TAKE ACTION

You must take action when one  
of the safety rules is broken.  
It's what a real mate would do!



You are responsible for your  
and your mates' safety!

